

**DESKTOP AUTHORITY**  
**IMAGE CENTER™**



**License Server**  
**User's Guide**

**SCRIPTLOGIC**

**Copyright © 2006 ScriptLogic Corporation and its licensors. All rights reserved.  
Portions include technology used under license from Acronis Software and are copyrighted.**

This publication is protected by copyright and all rights are reserved by ScriptLogic Corporation. It may not, in whole or part, be copied, photocopied, reproduced, translated, or reduced to any electronic medium or machine-readable form without prior consent, in writing, from ScriptLogic Corporation. This publication supports Desktop Authority Image Center 2.0. It is possible that it may contain technical or typographical errors. ScriptLogic Corporation provides this publication “as is,” without warranty of any kind, either expressed or implied.

ScriptLogic Corporation  
6000 Broken Sound Parkway NW  
Boca Raton, Florida 33487-2742

1.561.886.2400  
[www.scriptlogic.com](http://www.scriptlogic.com)

**Trademark Acknowledgements:**

Desktop Authority, ScriptLogic and the ScriptLogic logo are either registered trademarks or trademarks of ScriptLogic Corporation in the United States and/or other countries. The names of other companies and products mentioned herein may be the trademarks of their respective owners.

## DOCUMENTATION CONVENTIONS

### Typeface Conventions

**Bold** Indicates a button, menu selection, tab, dialog box title, text to type, selections from drop-down lists, or prompts on a dialog box.

## CONTACTING SCRIPTLOGIC

ScriptLogic may be contacted about any questions, problems or concerns you might have at:



ScriptLogic Corporation  
6000 Broken Sound Parkway NW  
Boca Raton, Florida 33487-2742



561.886.2400 Sales and General Inquiries  
561.886.2450 Technical Support



561.886.2499 Fax



[www.scriptlogic.com](http://www.scriptlogic.com)

## SCRIPTLOGIC ON THE WEB

ScriptLogic can be found on the web at [www.scriptlogic.com](http://www.scriptlogic.com). Our web site offers customers a variety of information:

- Download product updates, patches and/or evaluation products.
- Locate product information and technical details.
- Find out about Product Pricing.
- Search the Knowledge Base for Technical Notes containing an extensive collection of technical articles, troubleshooting tips and white papers.
- Search Frequently Asked Questions, for the answers to the most common non-technical issues.
- Participate in Discussion Forums to discuss problems or ideas with other users and ScriptLogic representatives.

# CONTENTS

<b>OVERVIEW .....</b>	<b>1</b>
<b>INSTALLATION AND RUNNING.....</b>	<b>2</b>
<b>ADDING LICENSES TO LICENSE SERVER.....</b>	<b>3</b>
<b>VIEWING INFORMATION ABOUT LICENSES .....</b>	<b>4</b>
<b>USING THE LICENSE SERVER MANAGEMENT TOOL.....</b>	<b>4</b>

## OVERVIEW

The **License Server** is a mechanism that tracks deployment licenses.

When installing OS Deploy Server, you have to specify the License Server. You may specify the server's DNS name, IP address, or let the License Server to be found automatically on the network. Once the License Server is found, the program checks for available licenses on the server and stores its net address to be able to access the License Server later, when deployment is launched.

When performing a deployment, OS Deploy Server checks the availability of free licenses on License Server. If there are enough free licenses for the deployment, the deployment process will run and the number of free licenses will decrease by the number of deployed systems.

License Server tracks the number of licenses using a MAC address, which is unique for each network interface card (NIC). Although a MAC address is usually hardwired to the NIC, some operating systems offer a way to change it. It is important to note that attempting to change the MAC address on a system may impede the License Server operation and prevent you from other deployments to the same computer or from managing that computer from the Disk Image Center Management Console.

Disk Image Center licenses cannot be reused.

## INSTALLATION AND RUNNING

You must install the License Server and import product licenses before installing OS Deploy Server.

### Supported operating systems

---

Windows XP Professional x64 Edition, Windows Server 2003 x64 Editions

Windows NT 4.0 Server SP6/2000 Server/2000 Advanced Server/2003 Server

Windows NT 4.0 Workstation SP6/2000 Professional SP4/XP Professional SP2

Windows 98/Me

### Typical, Custom and Complete License Server installation

---

You can choose **Typical**, **Custom** or **Complete** installation of License Server. The complete installation includes **License Server**, **License Server Management Console** and **License Server Management Tool**. Typical installation includes License Server and the License Server Management Console. Custom choice allows separate installation of all three components.

The License Server Management Tool is a command-line utility for controlling the License Server, while the License Server Management Console provides an easy-to-use GUI and additional features such as remote Disk Image Center components installation. You may install only the License Server and manage it via the Disk Image Center Management Console.

After installation, License Server launches automatically as Windows service.

## ADDING LICENSES TO LICENSE SERVER

You can add the product serial numbers to the License Server using the Disk Image Center Management Console. Trial versions of the product will be managed by License Server; however the serial numbers will only be valid for a limited period of time.

ScriptLogic recommends that you save serial numbers in a text file since the License Server can import multiple serial numbers from a .txt file, saving you from time-consuming procedure of typing in each serial number. You may create one file with all serial numbers or separate files for each product or purchase. These serial numbers can then be imported to the License Server.

Once the License Server has imported the serial numbers, you may delete the text file(s) with the serial numbers. When upgraded, recovered or reinstalled, the License Server keeps all the imported serials in its memory. It is recommended that you copy the file(s) with serial numbers to removable media, or create a hard copy of that file(s) and keep it in a safe place. This ensures that you have license data available in case of hardware failure.

Here's how to add licenses to the License Server:

1. Connect to the computer where License Server is installed.
2. Select **Manage Licenses** in the Disk Image Center Management Console main window. The Management Console window will display the following:

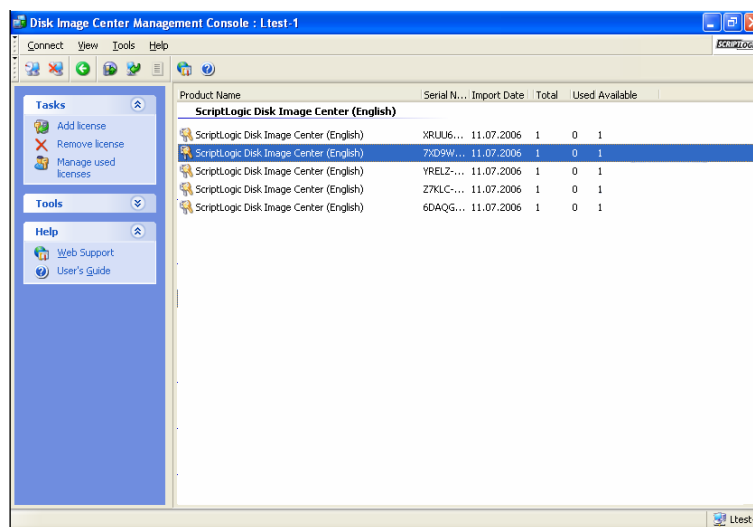


Figure 1. Viewing all licenses

3. Launch the **Add License Wizard**. To do so, right-click in the main area and select **Add License** or click the same in the **Tasks** group of the sidebar. Then click **Next** in the wizard welcome window.
4. In the **Add License** window, type in the serial number or a path to the text file containing serial numbers. You can also browse folders to find the text file.

5. In the final window, click **Proceed**. License Server performs the operation and reports the number of new-added licenses.

## VIEWING INFORMATION ABOUT LICENSES

1. Connect to the computer where License Server is installed.
2. Select **Manage Licenses** in the Disk Image Center Management Console main window.

There are two modes of viewing data.

The default mode lists all licenses available on the current License Server. Right-click on the column headings bar to choose details to display: **Product Name, Serial Number, Import Date, Expiration Date** and **Total** number of licenses assigned to each serial number, as well as how many of them are **Available** and **Used**. For example, if one license corresponds to one serial number, Total=1, Available=1, Used=0 (if the license is free) or Available=0, Used=1 (if the license is engaged).

To display more information about used licenses, select **Manage Used Licenses** in the **Tasks** group on the sidebar.

The **Used** mode lists all licenses that are engaged. Right-click on the column headings bar to choose details to display: **Product Name, Host Name** (name of the computer using this license), **Host Address, Serial Number**, and **Acquire Date** (when the product using the license was installed).

You can sort any list using **View -> Arrange Icons by**.

## USING THE LICENSE SERVER MANAGEMENT TOOL

The License Server includes a special command-line utility LicenseServerCmdLine.exe that allows you to manage license information.

During the License Server installation, LicenseServerCmdLine.exe file will be placed in the installation folder, e. g.

C:\Program Files\DiskImageCenter\LicenseServer.

**LicenseServerCmdLine.exe** uses the following syntax:

```
LicenseServerCmdLine [command] [option1] [option2]
```

LicenseServerCmdLine.exe supports the following commands and command options:

**--list**

Displays the list of the License Servers available in the local network.

**--status [server name or server IP-address]**

Displays specified License Server status.

**--import [server name] [serial key]**

Adds information about new license (new serial key). You can specify multiple serial numbers (space separated).

**--import-file [server name] [filename]**

Imports license serial keys from .txt or .eml file.

**--help**

Shows usage.

**To import serial numbers to the License Server:**

1. After the License Server installation run the LicenseServerCmdLine.exe in the Windows Command Prompt (cmd.exe).

2. If you want to import all serial numbers at once type following command:

```
LicenseServerCmdLine --import-file [computername] [filename]
```

where:

**computername** – name of the computer with License Server installed

**filename** – name of the saved file (\*.txt or \*.eml) with serial numbers

Example:

```
LicenseServerCmdLine --import-file MyServer serials.txt
```

3. If you want to import serial numbers manually type the following command:

```
LicenseServerCmdLine --import [computername] [serial1]  
[serial2] ...
```

where:

**computername** – name of the computer with License Server installed

**serial** – license serial number

For example:

```
LicenseServerCmdLine --import MyServer NL6ER-HDVVY-2ZJ27-RRMMH-  
AH7Q7
```